

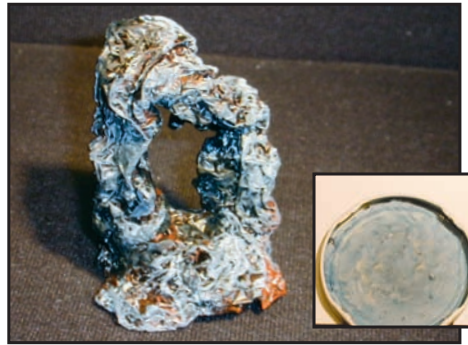
Jar Scene

You will need...

- Scene-A-Rama® Foliage & Grasses Kit
- Glass Jar with Lid
- Aluminum Foil
- Paints
- Small stick
- Glue



Twist aluminum foil into terrain shape, making sure it will fit back inside the jar when finished.



Paint the foil earth colors and the inside of the lid blue.



Spray with Project Glue and sprinkle Turf colors. Make Trees with sticks and Bushes or Foliage Fiber. Glue trees and Bushes in place. Sprinkle Yellow Flowers and Spray with Project Glue to seal. Glue scene to inside of jar lid, replace jar and display.